

# Functions

Nov 4-10:26 AM

**Warm Up:**

State the domain and range for each of the following:

$$y = 3x - 2$$

$$D = \{x \in \mathbb{R}\}$$

$$R = \{y \in \mathbb{R}\}$$

$$y = -2(x-1)^2 + 3$$

$$D = \{x \in \mathbb{R}\}$$

$$R = \{y \in \mathbb{R} \mid y \leq 3\}$$

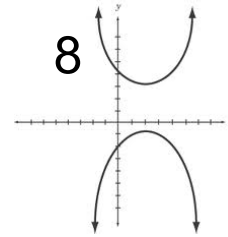
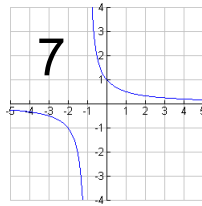
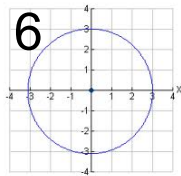
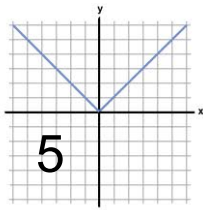
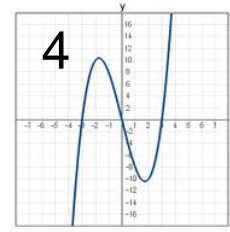
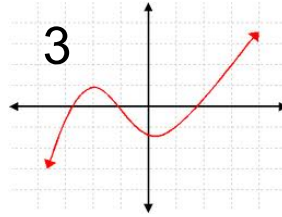
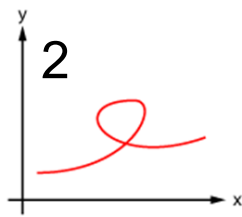
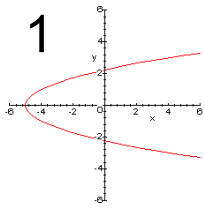


Mar 19-7:45 AM

Looking at the graphs below - half are functions and half are only relations. Can you sort them?



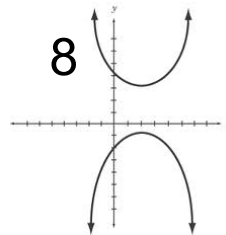
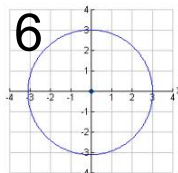
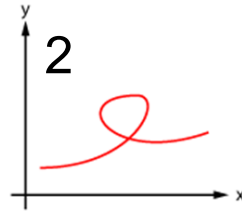
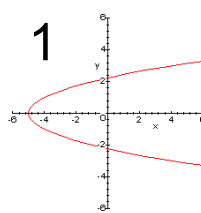
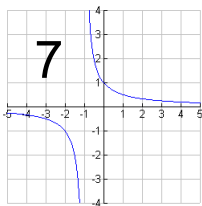
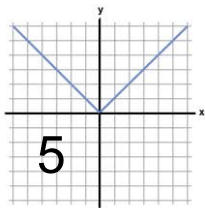
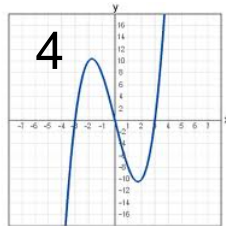
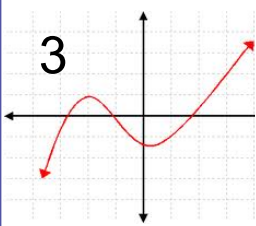
ANSWERS



Mar 19-7:45 AM

## Functions

## Relations



Mar 19-7:45 AM

## What is a Function vs a Relation



**Relation**: an identified pattern between two variables that may be represented as ordered pairs, a table of values, a graph or an equation.

**Function**: a relation in which each value of the independent variable ( $x$ ) corresponds to exactly one value of the dependent variable ( $y$ ).



Mar 19-7:45 AM

## Determining Functions: The Vertical Line Test (VLT)



From a graph, we can determine if a relation is a function by using the vertical line test (VLT).

The vertical line test consists of taking a vertical line and sliding it across the relation. If the line touches the function more than once at any spot, then the relation is not a function.



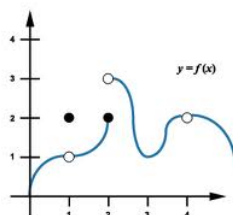
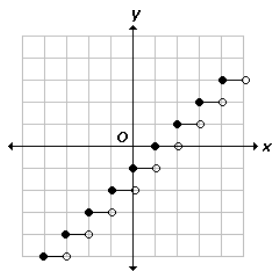
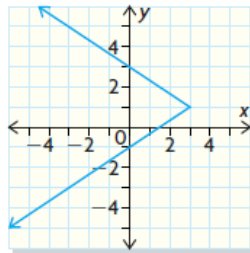
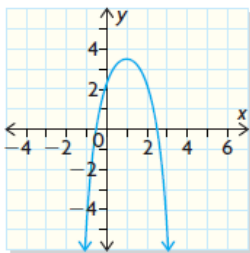
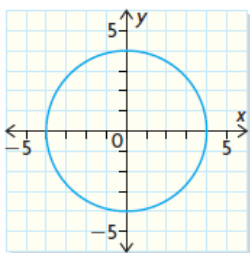
Mar 19-7:45 AM

### Example

ANSWERS



Determine if the relations are functions.

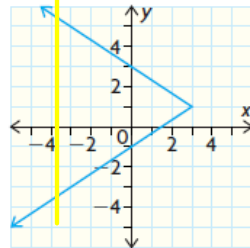
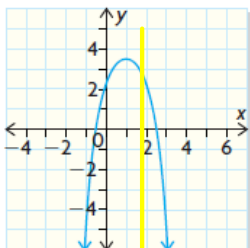
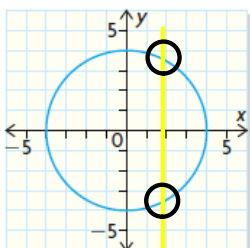


Mar 19-7:45 AM

### Example



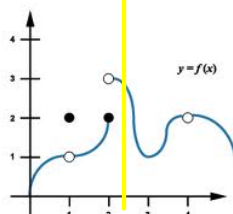
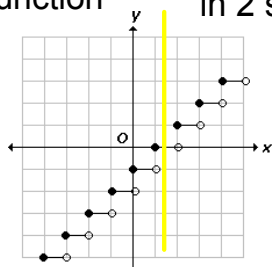
Determine if the relations are functions.



crosses in two spots  
-> not a function

vertical line will never cross  
in 2 spots -> function

crosses in two spots  
-> not a function



vertical line will never cross  
in 2 spots -> function

vertical line will never cross  
in 2 spots -> function



Mar 19-7:45 AM

## Determining Functions: A Table of Values



To determine if we have a function when given a table of values, we need to look at the x column.

If an x-value were to repeat itself, it must have the same associated y-value to be a function.

If an x-value has more than one y-value associated with it, then it is a relation.



Mar 19-7:45 AM

### Example

ANSWERS



Determine if the relations are functions.

x	y
0	1
2	5
4	-1
8	1
10	1

x	1	2	3	4
y	5	7	9	11

 $\{(0, 4), (3, 5), (5, -2), (0, 1)\}$ 


Mar 19-7:45 AM

**Example**

Determine if the relations are functions.

x	y
0	1
2	5
4	-1
8	1
10	1

function: no  
x-values repeat

x	1	2	3	4
y	5	7	9	11

function: no  
x-values repeat

$\{(0, 4), (3, 5), (5, -2), (0, 1)\}$

not a function:  $x=0$  is  
repeated and has  
different values of  $y$   
(0,4) and (0,1)



Mar 19-7:45 AM

## Determining Functions: Mapping Diagrams

To read a mapping diagram, we take the value from the first "bubble" - your  $x$ , and the value from the second "bubble" - your  $y$ , and we make a point.

To determine if we have a function when given a mapping diagram, we need to look at the arrows.

If there are two arrows from the same value in the first bubble pointed to different values in the second bubble, then we don't have a function.



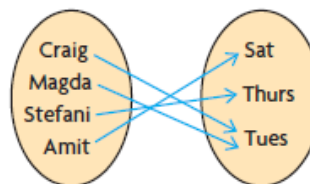
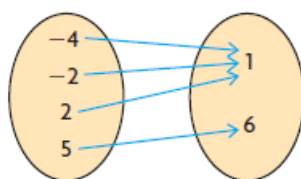
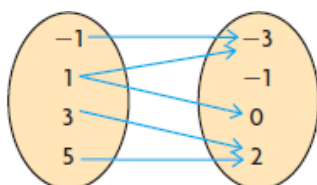
Mar 19-7:45 AM

**Example**

ANSWERS



Write the ordered pairs from each diagram.  
Determine if the relations are functions.

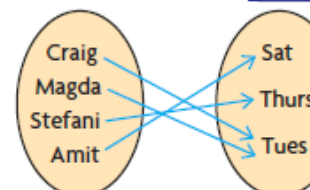
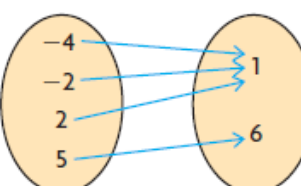
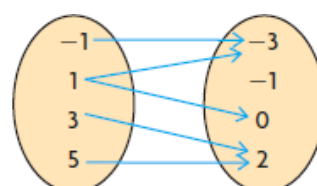


Mar 19-7:45 AM

**Example**



Write the ordered pairs from each diagram.  
Determine if the relations are functions.



- $(-1, -3)$
- $(1, -3)$
- $(1, 0)$
- $(3, 2)$
- $(5, 2)$

not a function because  $x=1$  has two different values of  $y$  (-3 and 0)

- $(-4, 1)$
- $(-2, 1)$
- $(2, 1)$
- $(5, 6)$


function because no  $x$  values repeat

- $(\text{Craig}, \text{Tues})$
- $(\text{Magda}, \text{Tues})$
- $(\text{Stefani}, \text{Thurs})$
- $(\text{Amit}, \text{Sat})$

function because no  $x$ -values repeat





Mar 19-7:45 AM


**Common Functions** ANSWERS 

Of the functions you have seen to this point, which are functions which are only relations?

Functions		Relations	
Cubic Root	Quadratic	Absolute Value	Circle Reciprocal Line



 

Mar 19-7:45 AM

**Common Functions** 

Of the functions you have seen to this point, which are functions which are only relations?

Functions		Relations	
Cubic	Root	Circle	
Quadratic	Line		
Absolute Value			
Reciprocal			

Mar 19-7:45 AM



# Homework

Nelson Page 10 #s 1, 2, 4, 6, 7 & 9



Mar 19-7:45 AM